

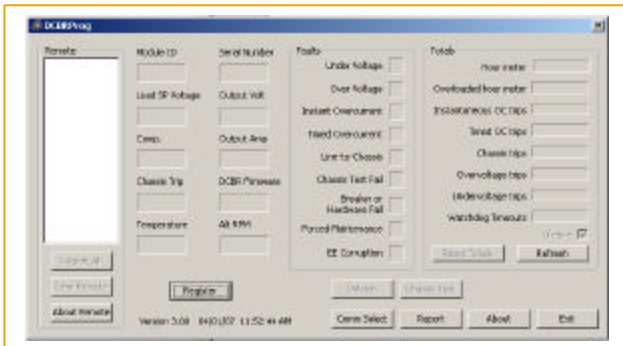
DCBR Remote (Ex ia) Overview

The **DCBR REMOTE** is an IECEx certified, Ex ia I system to communicate with the DCBR (electronic regulator / protection) module, that is routinely fitted to the Mining Repairs MR110 series flameproof alternators. The REMOTE externalises all of the panel features on the DCBR including <RESET> pushbutton, <TEST> pushbutton and LED indication and makes them accessible without the need to remove the alternator cover (compromising the flameproof integrity) or relocation of the vehicle to a non-hazardous zone.

The REMOTE is housed in a ruggedised fire-resistant, antistatic enclosure and communicates with the DCBR via an optical cable that is sheathed in a crush-resistant, kink-resistant stainless coil. It couples directly to a certified optical window on the alternator cover.

When the REMOTE is presented to an active DCBR, auto recognition and communication occurs over the infrared optical path. With communications established, the user has the ability to RESET or TEST the DCBR and the LED panel on the REMOTE lights up in the same manner as the panel on the DCBR in the alternator. There is no need to access the physical buttons inside the alternator. In the background the REMOTE automatically downloads data from the DCBR including run hours, alternator voltage alternator current and temperature which is stored against the DCBR serial number. The data can be logged in the remote from multiple alternators. The analog data is only valid at the time the reading is made and trending is not available.

When the REMOTE is taken back to the office, the stored alternator data can be uploaded to a workstation using the utility program (DCBRProg) running under a Windows operating system.



The REMOTE is powered by certified non re-chargeable batteries that are capable of 10,000 operating cycles, before replacement is required. Circuits in the DCBR have been optimised for



battery performance and to further conserve power, the reader circuits are automatically shutdown after a short period of keyboard inactivity. Indication of a low battery condition is provided.

A comprehensive system includes –

Part Number	Description
M139	DCBR Protection Regulator module fitted to MR110 alternator
M160	Serial infrared communications adapter fitted to DCBR module
M161	DCBR Remote (Ex ia) with fibre optical cable and carry case
M164	Infrared optical window (Ex d) with dust cap, fitted to modified MR110 endplate
M162	Application software running under MS Windows and SIR USB dongle

The DCBR REMOTE is supplied with a robust timber carry case that can be taken into hazardous areas, to protect it from damage in transit.

The system is compatible with all DCBR with firmware from V1.20 and onwards.

Users of the MR110 / DCBR alternator will find the DCBR REMOTE useful for resetting protection trips that may have occurred in hazardous areas. Fleet managers will welcome the opportunity to easily collect vehicle utilisation and performance data.

To enquire further please contact :